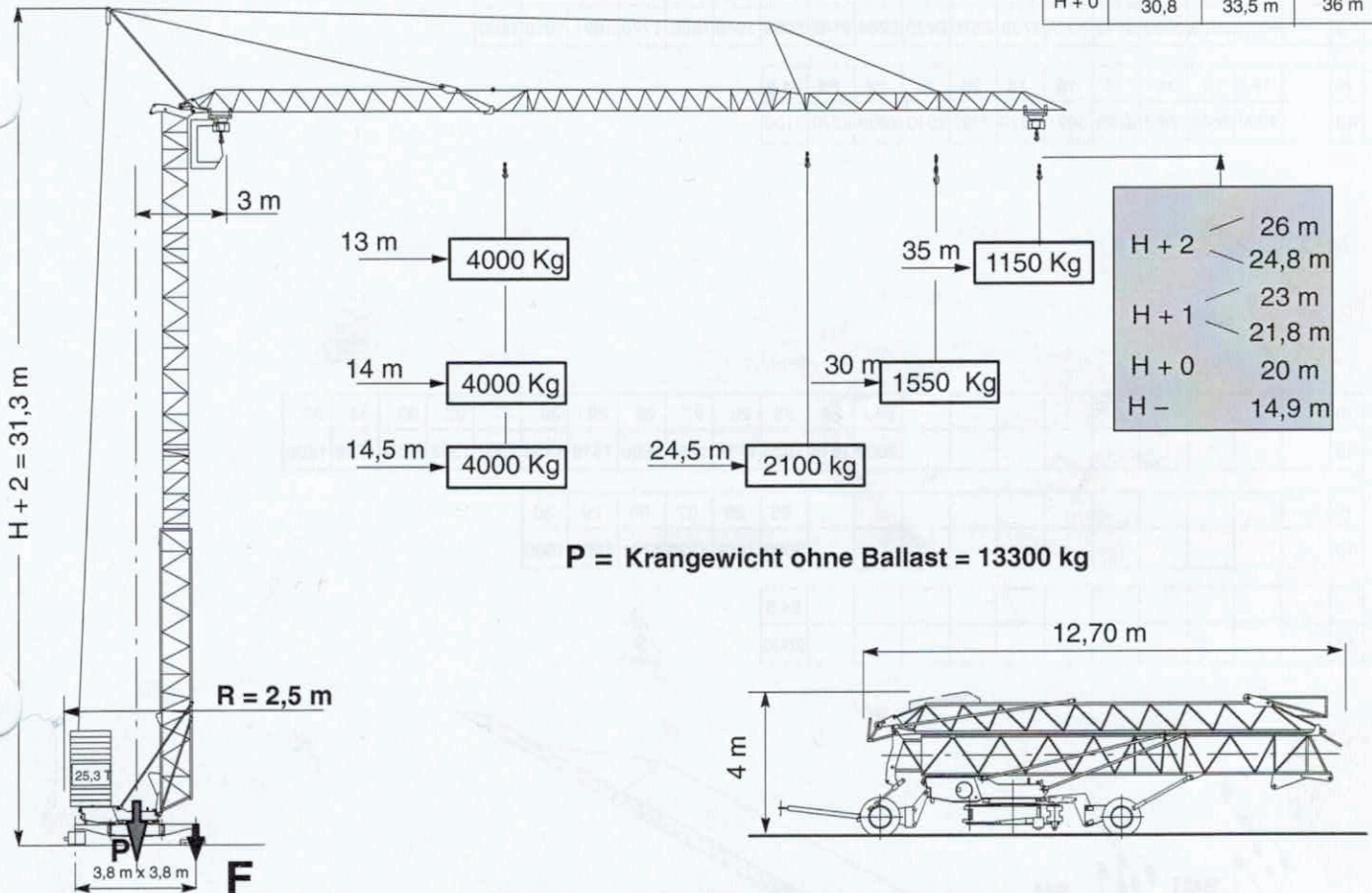
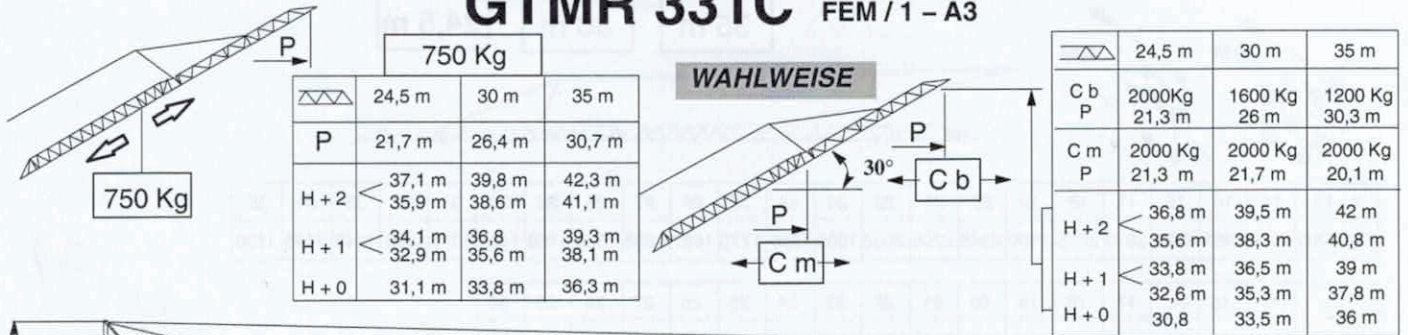
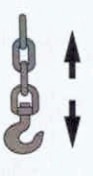






TECHNISCHE DATEN

1. DATENBLATT

GTMR 331C FEM / 1 - A3

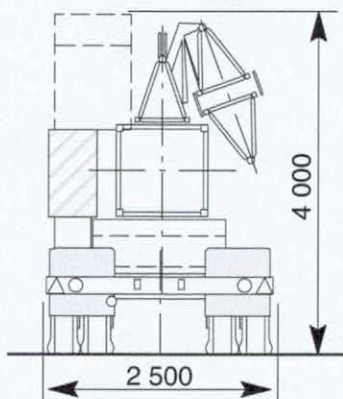
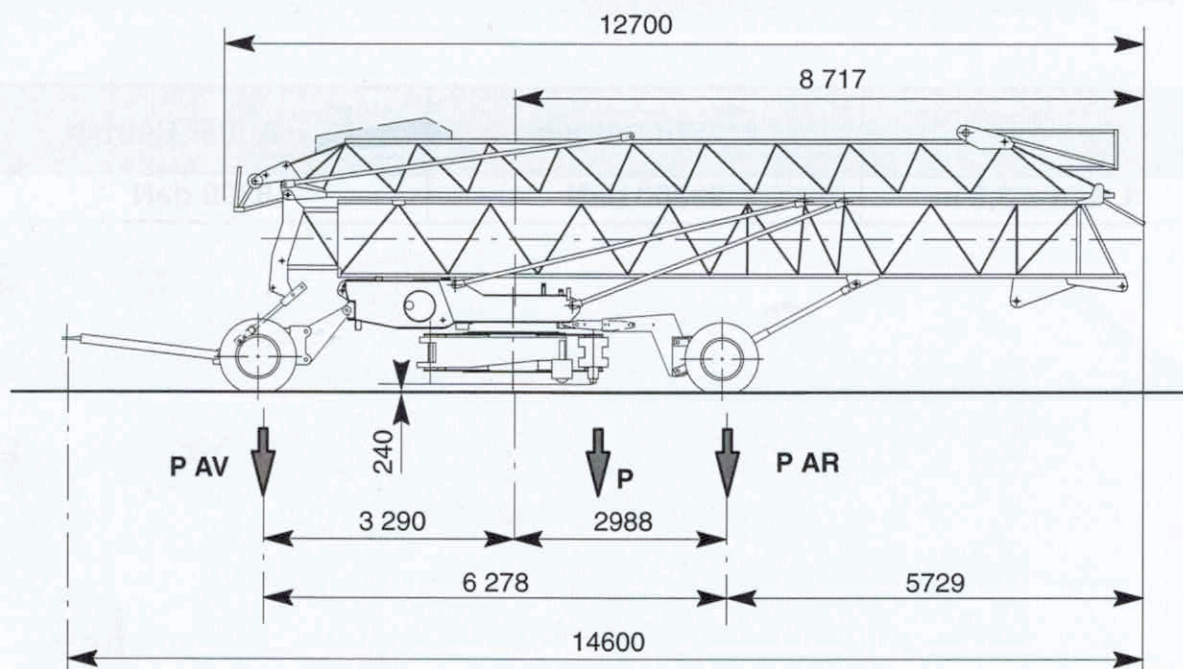


	20LVF10	<i>bd</i>		<i>bgd</i>		15 kW
		MV = 5 m / mn PV = 25 m / mn GV = 50 m / mn	2000 Kg 2000 Kg 1300 Kg	MV = 2,5 m / mn PV = 12,5 m / mn GV = 25 m / mn	4000 Kg 4000 Kg 2600 Kg	
	3 D2V4	22 - 44 m / mn				3 kW
	RCV 22	0 -----> 0,8 tr / mn				2,2 KW
	TVD122	25 m / mn				2 x 1,5 kW
		400V (+ 6% - 10%) - 50Hz = 25 KVA				

1. VERPACKUNG – STRASSENTRANSPORT

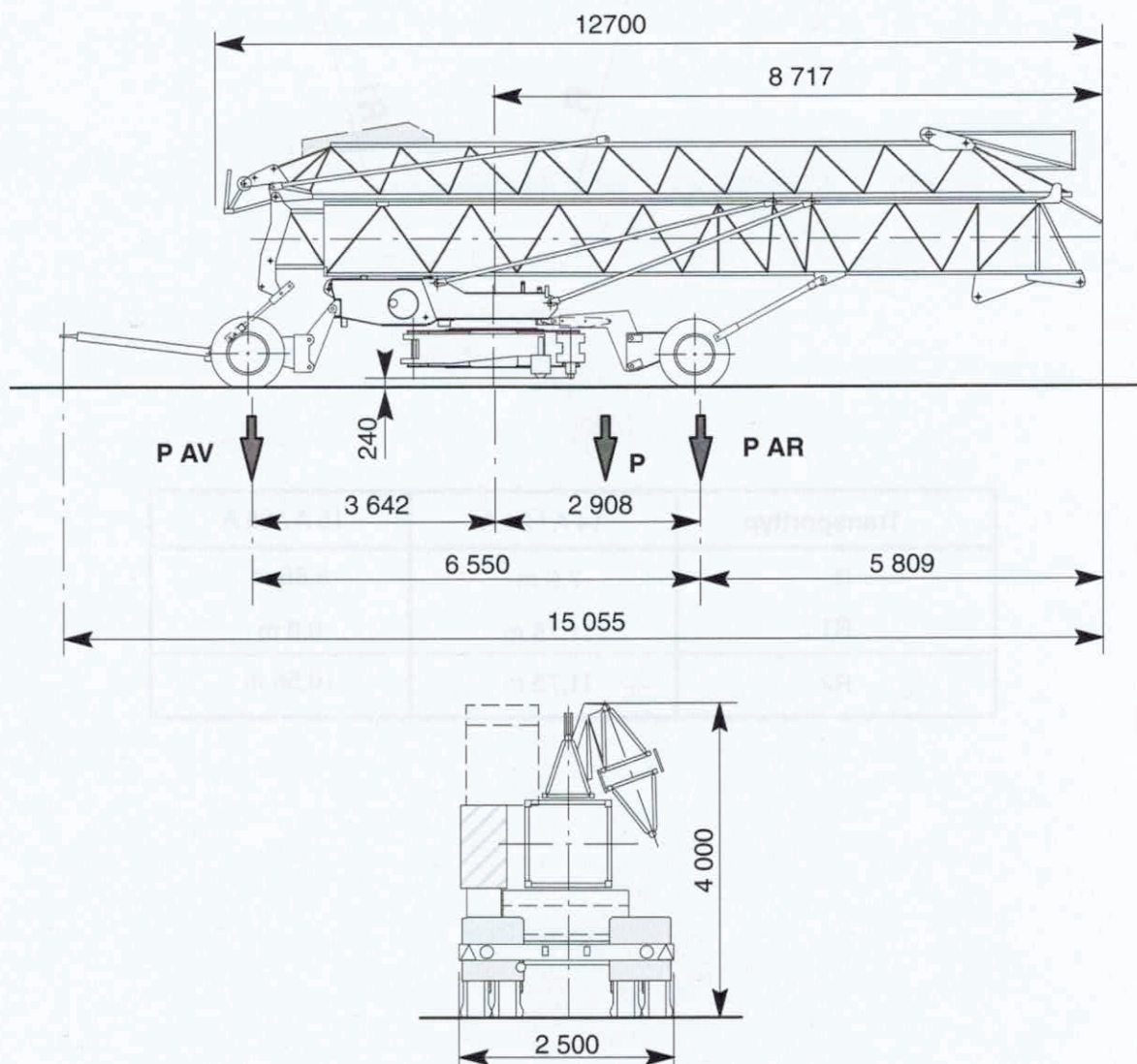
1. 1. TRANSPORT ALS ANHÄNGER (25 km/h)

Transporttyp		14 A / 21 A
P		13520 Kg
P AR		9550 Kg
P AV		3570 Kg
REIFEN	TYP	2 x (7,50 x 16)
VORNE	DRUCK	8,2 bars
REIFEN	TYP	4 x (7,50 x 20)
HINTEN	DRUCK	8,5 bars

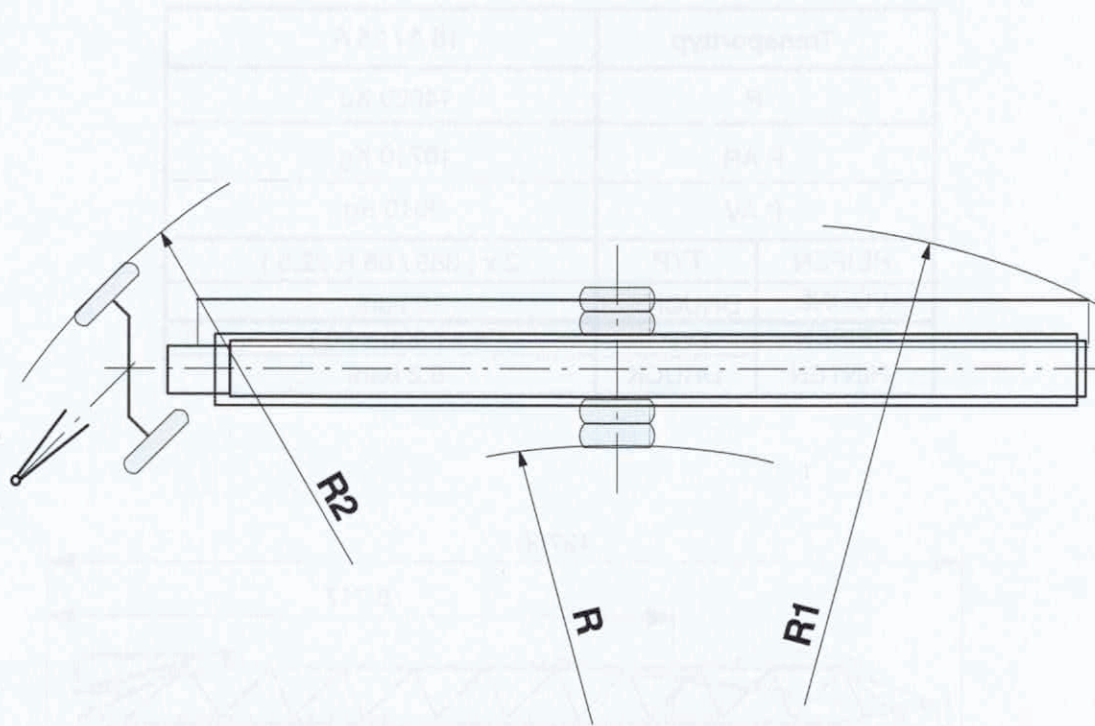


1. 2. TRANSPORT ALS ANHÄNGER (25 km/h)

Transporttyp		15 A / 25 A
P		14620 Kg
P AR		10710 Kg
P AV		3910 Kg
REIFEN	TYP	2 x (385 / 65 R 22,5)
VORNE	DRUCK	10 bars
REIFEN	TYP	4 x (900 x 20)
HINTEN	DRUCK	8,2 bars



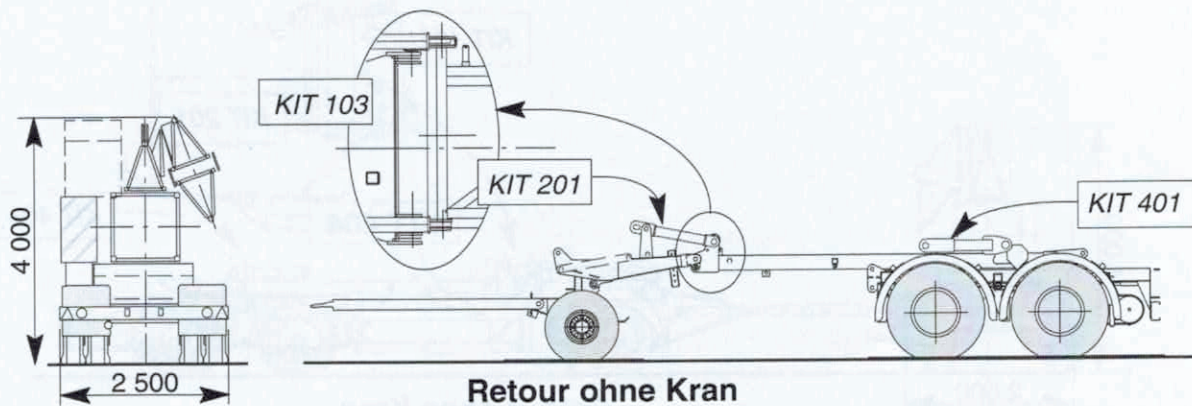
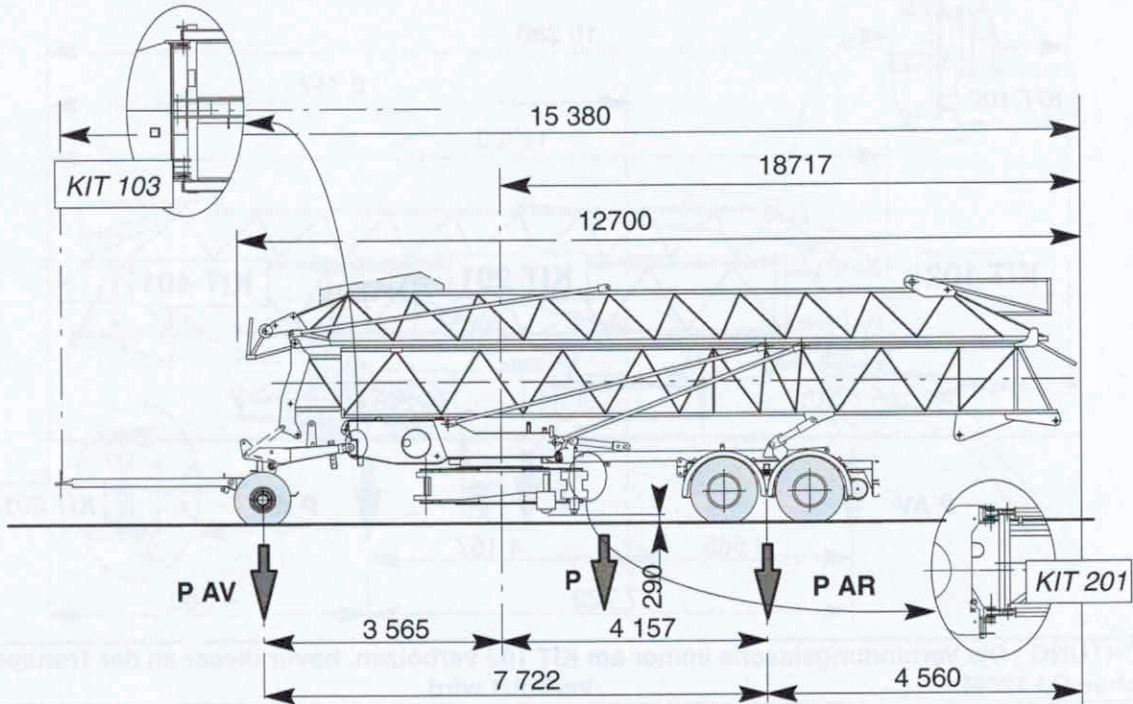
1. 3. WENDERADIUS



Transporttyp	14 A / 21 A	15 A / 25 A
R	7,9 m	5,65 m
R1	11,75 m	9,8 m
R2	11,75 m	10,55 m

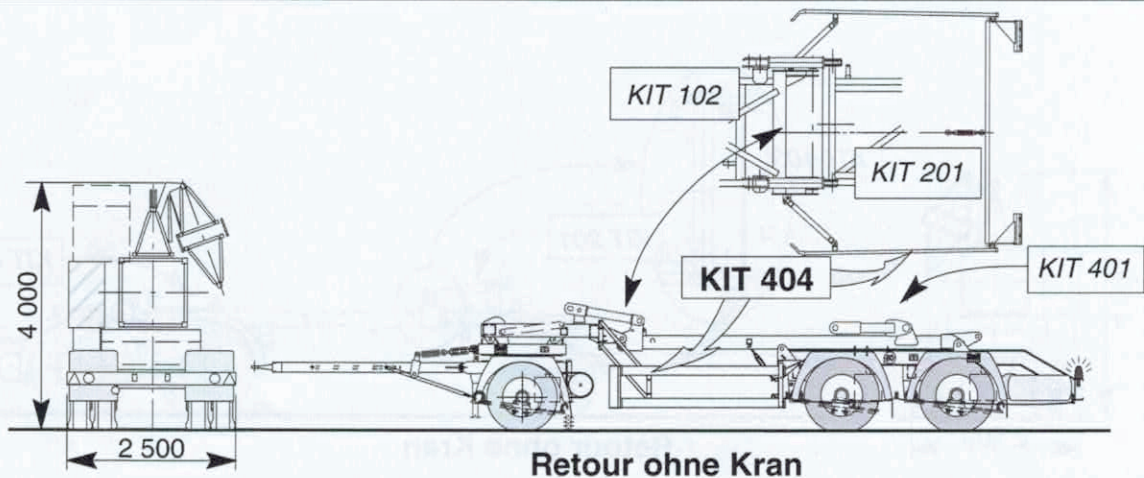
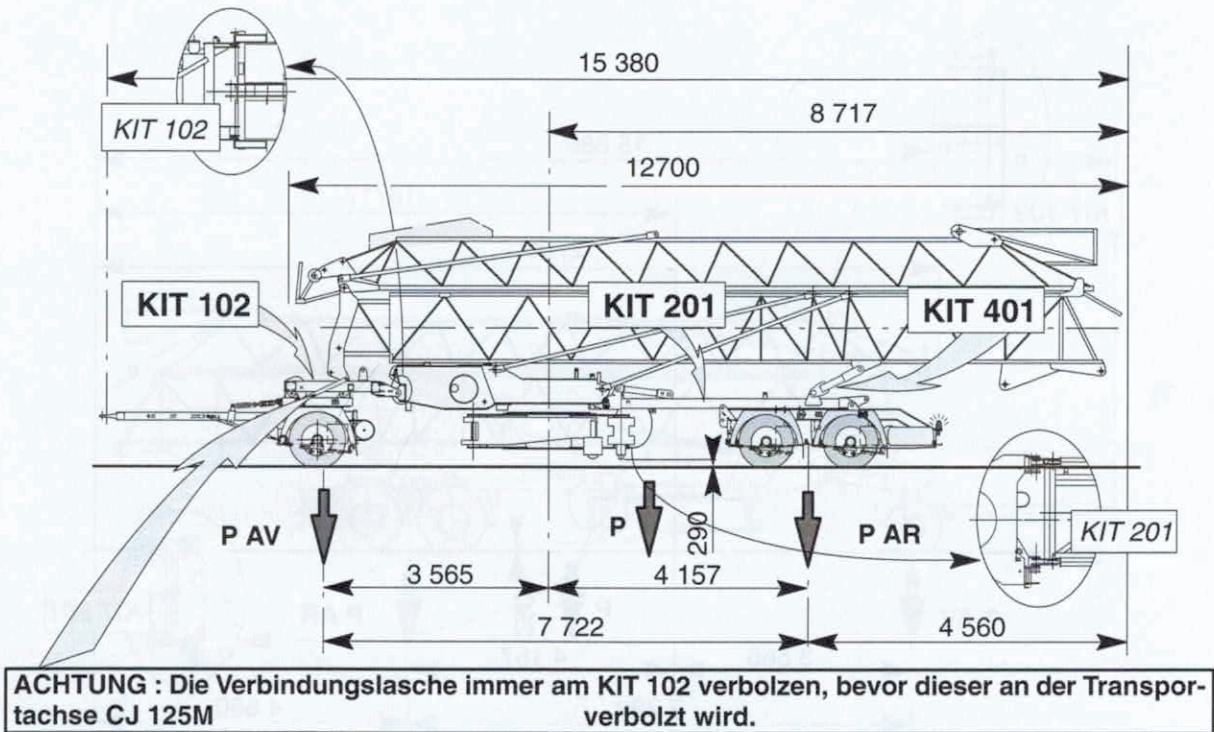
1. 4. TRANSPORT ALS ANHÄNGER (25 km/h)

Transporttyp		DJ 126M / S215M
P		16200 Kg
P AR		11100 Kg
P AV		5100 Kg
REIFEN	TYP	4 x (9,5 x 17,5)
VORNE	DRUCK	8,5 bars
REIFEN	TYP	4 (385 / 65 R22,5)
HINTEN	DRUCK	9 bars



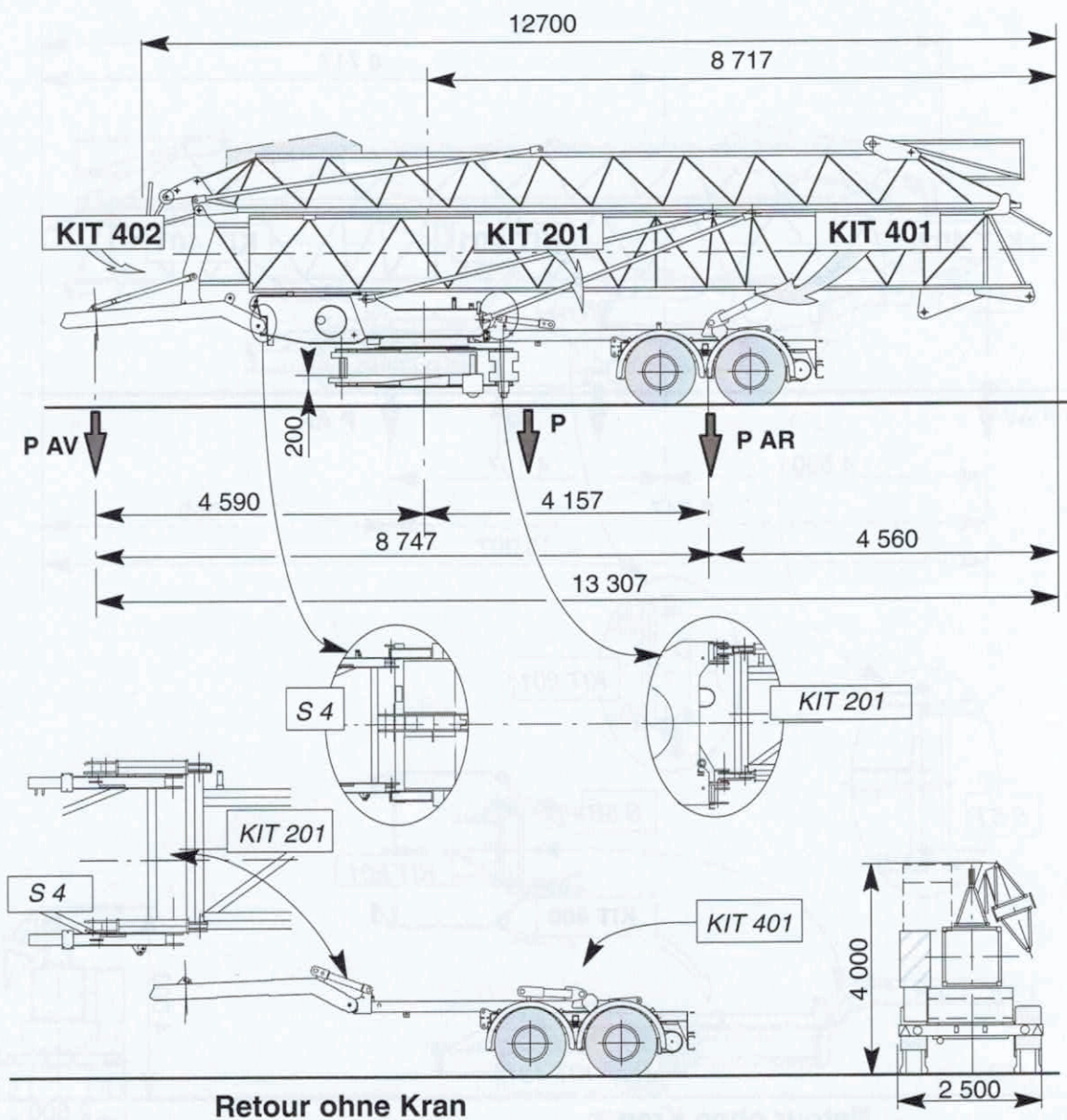
1. 5. TRANSPORT ALS ANHÄNGER (80 km/h)

Transporttyp		CJ 125M / J215M
P		16900 Kg
P AR		11000 Kg
P AV		5990 Kg
REIFEN	TYP	4 x (285 / 70 R19,5)
VORNE	DRUCK	8,5 bars
REIFEN	TYP	8 (285 / 70 R 19,5)
HINTEN	DRUCK	9 bars



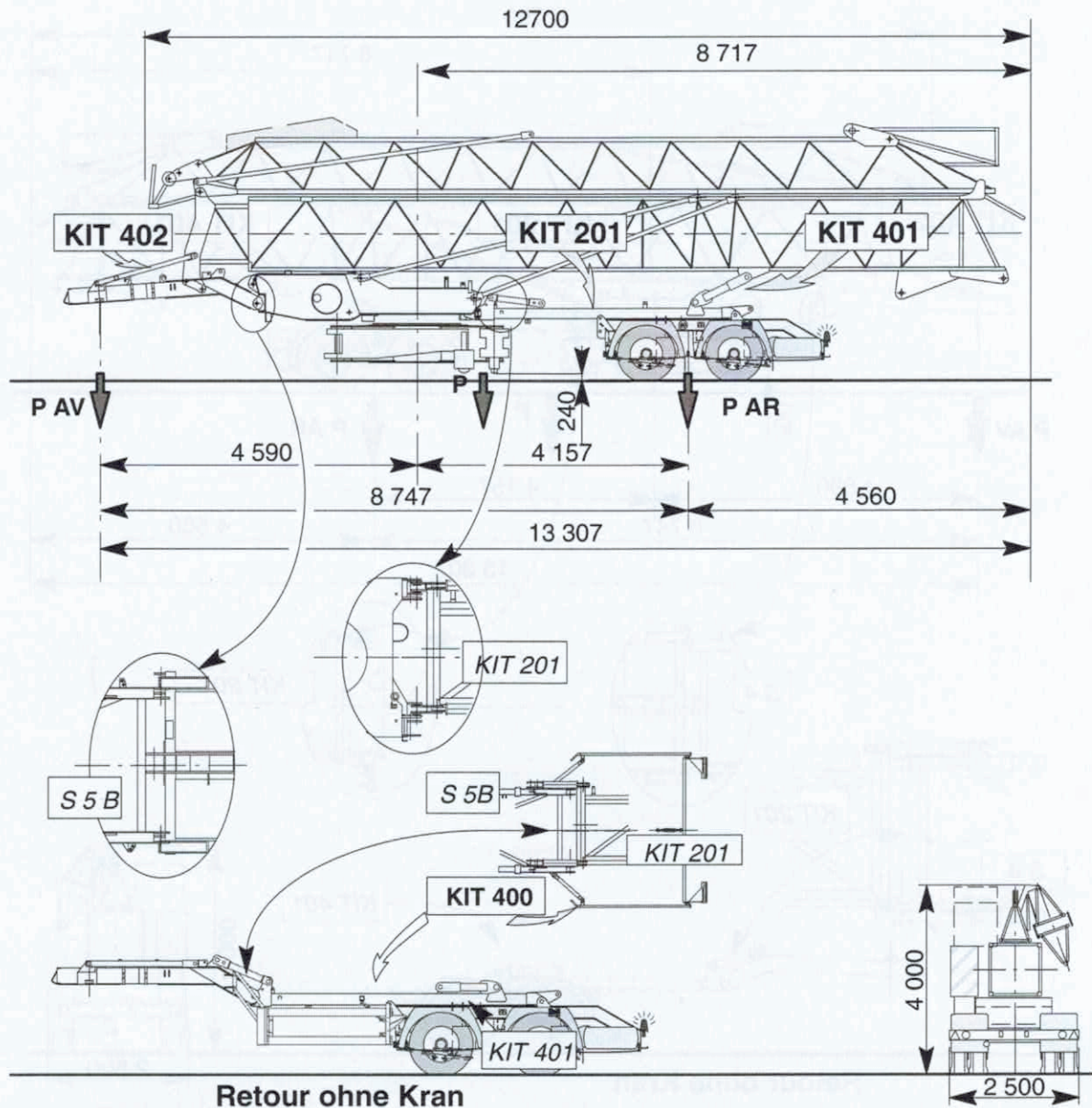
Transporttyp		S 4 / S215M
P		15900 Kg
P AR		11600 Kg
P AV		4300 Kg
REIFEN HINTEN	TYP	4 x (385 / 65 R 22,5)
	DRUCK	9 bars

1. 6. TRANSPORT ALS SATTELAUFLIEGER (25km / h)



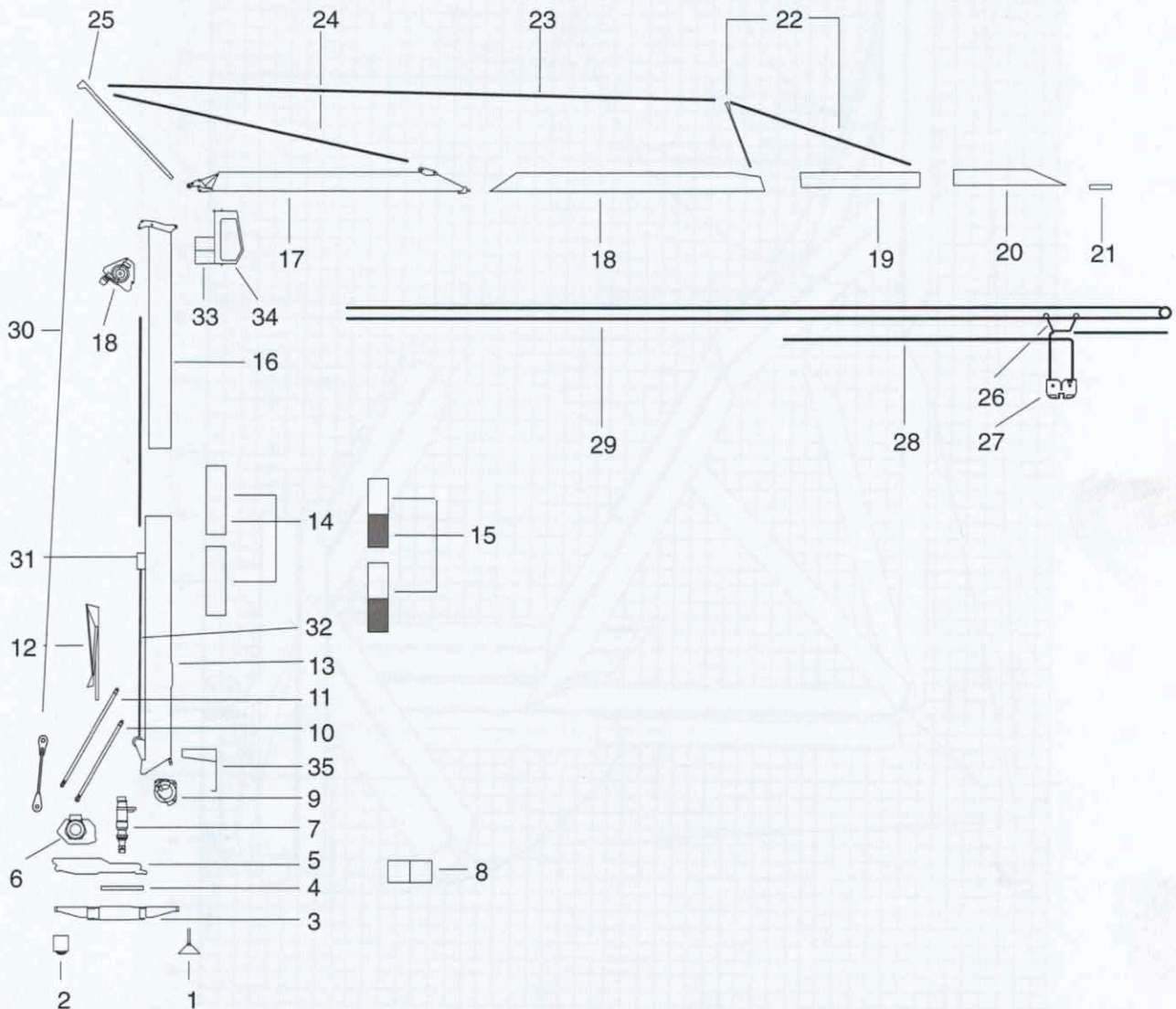
1. 7. TRANSPORT ALS SATTELAUFLIEGER (80km / h)

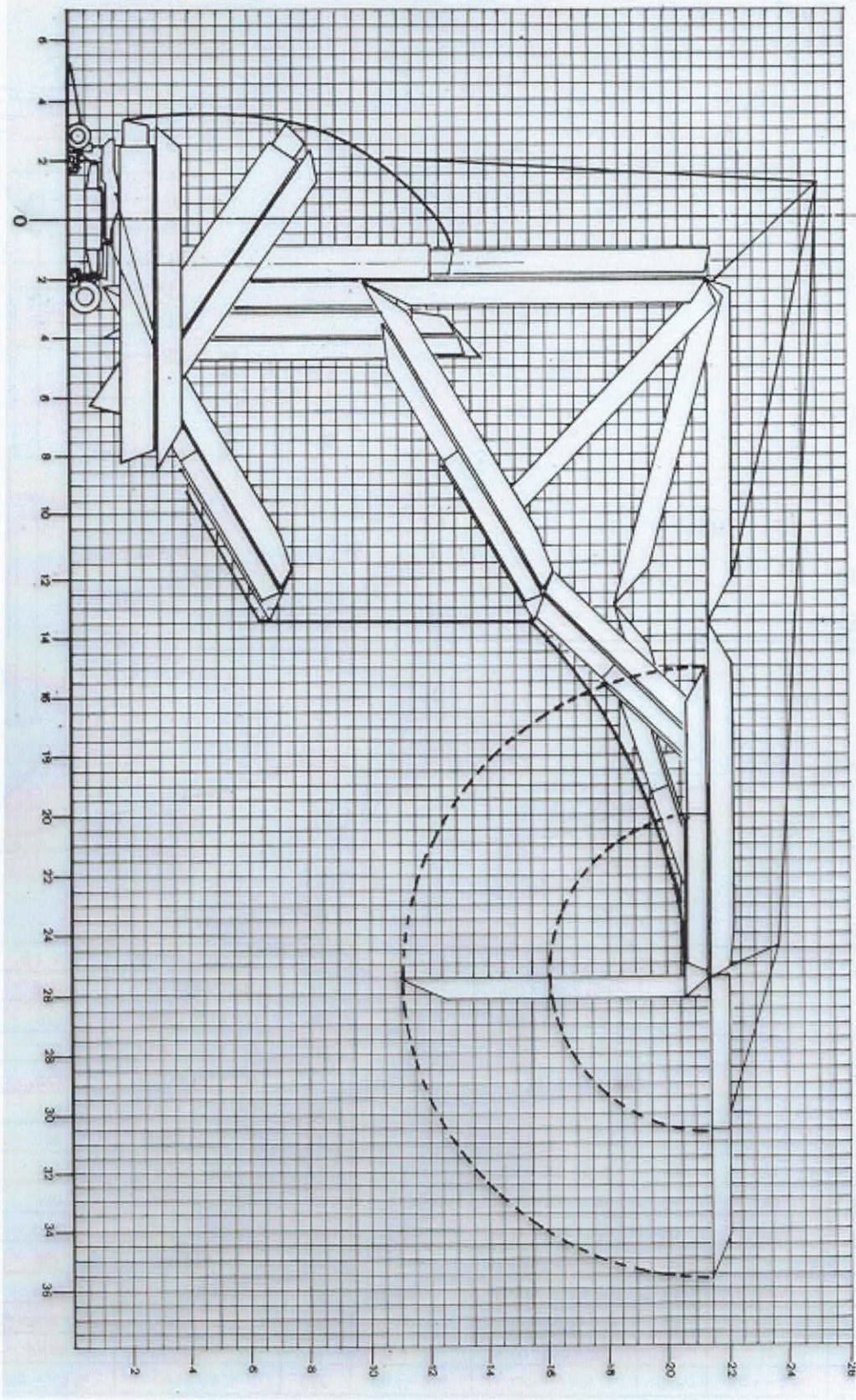
Transporttyp		S 5B / J215M
P		16200 Kg
P AR		11500 Kg
P AV		4700 Kg
REIFEN HINTEN	TYP	8 x (285 / 70 R 19,5)
	DRUCK	8,5 bars



1. ABMESSUNGEN UND GEWICHTE

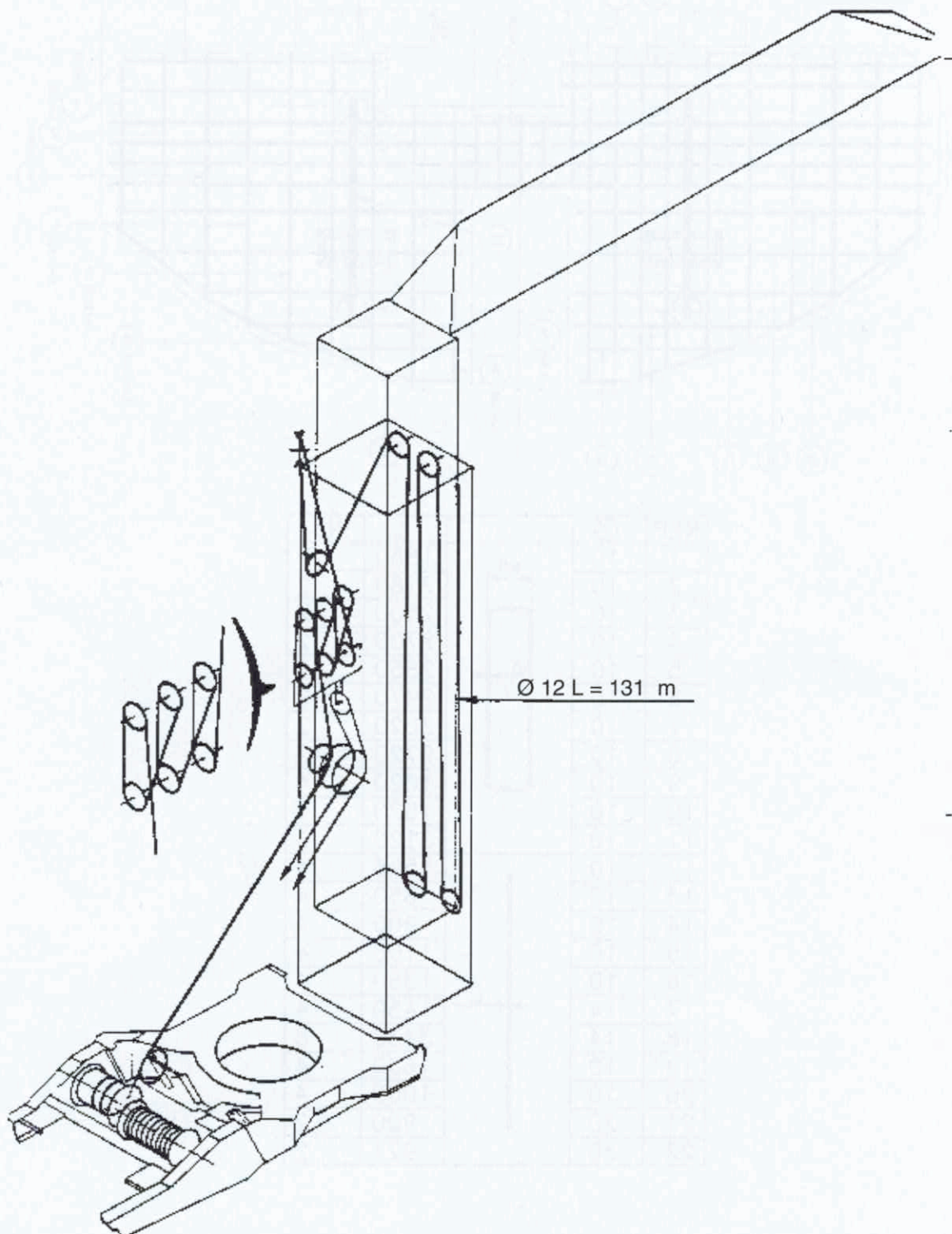
REP	Kg +- 5 %	mm +- 5 %	REP	Kg +- 5 %	mm +- 5 %	REP	Kg +- 5 %	mm +- 5 %
1	4 x 65		15	2 x 560	3100 x 920 x 865	29	10	Ø 7,5
2	2 x 68 . 2 x 138		16	1270	10930 x 870 x 865	30	205	Ø 32
3	1560	2130 x 2500 x 525	17	850	12000 x 1150 x 800	31	86	Ø 12
4	367	Ø 1290 x 114	18	515	11735 x 925 x 750	32	39	Ø 18
5	1280	3450 x 1650 x 840	19	155	5645 x 810 x 750	33	77	
6	780	1660 x 680 x 550	20	130	5035 x 635 x 750	34	260	2170 x 830 x 1110
7	142		21	25	590 x 265 x 275	35	50	2000 x 1125 x 75
8	162	1600 x 890 x 420	22	32				
9	195	1050 x 630 x 480	23	64				
10	242	4250 x 165 x 200	24	127	Ø 32			
11	235	5140 x 165 x 140	25	265	5100 x 280 x 880			
12	370	3600 x 500 x 200	26	158	895 x 865 x 765			
13	2010	11200 x 1850 x 1200	27	115	590 x 355 x 150			
14	2 x 420	3100 x 920 x 865	28	60	Ø 9			



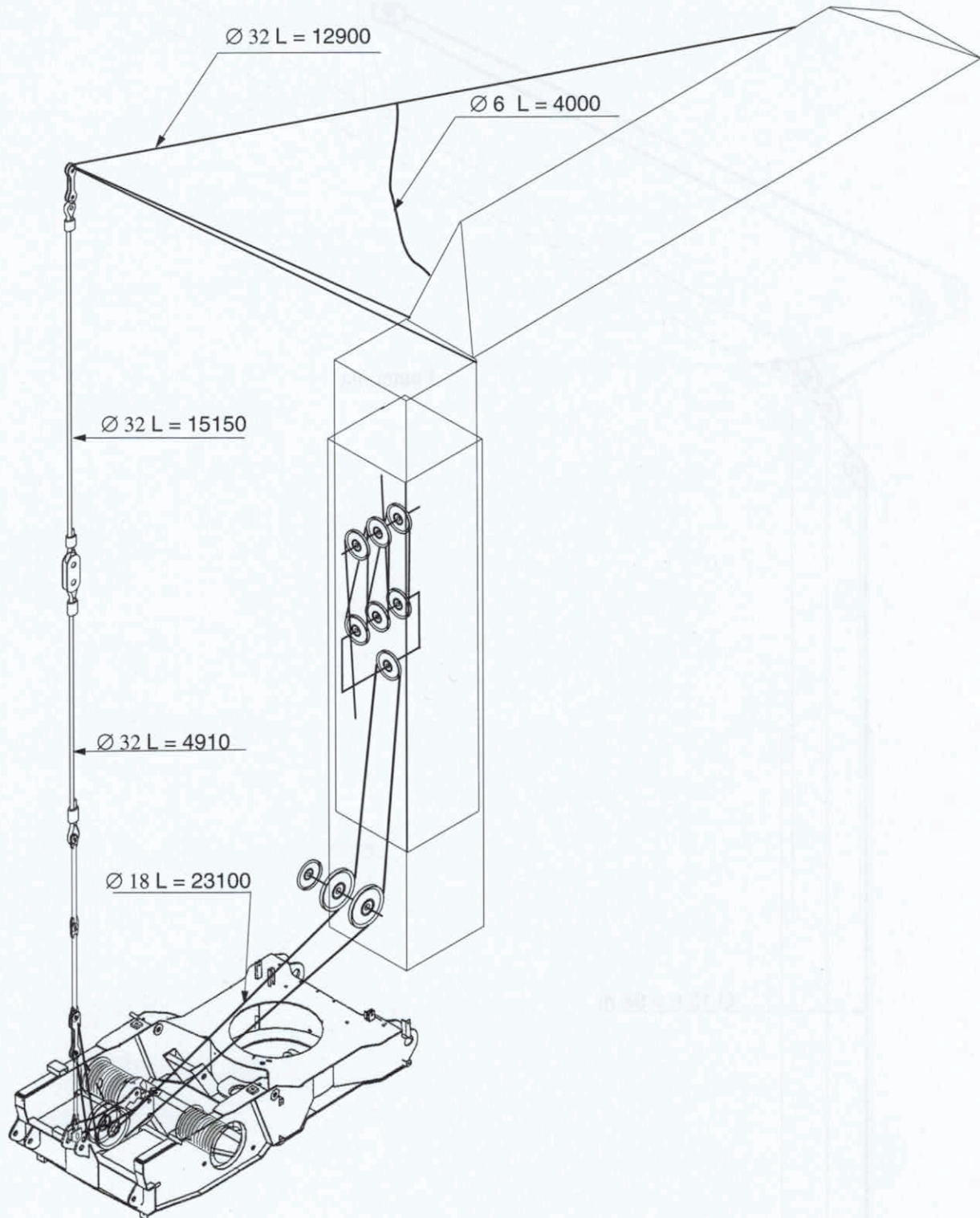


1 QUADRAT = 50 cm

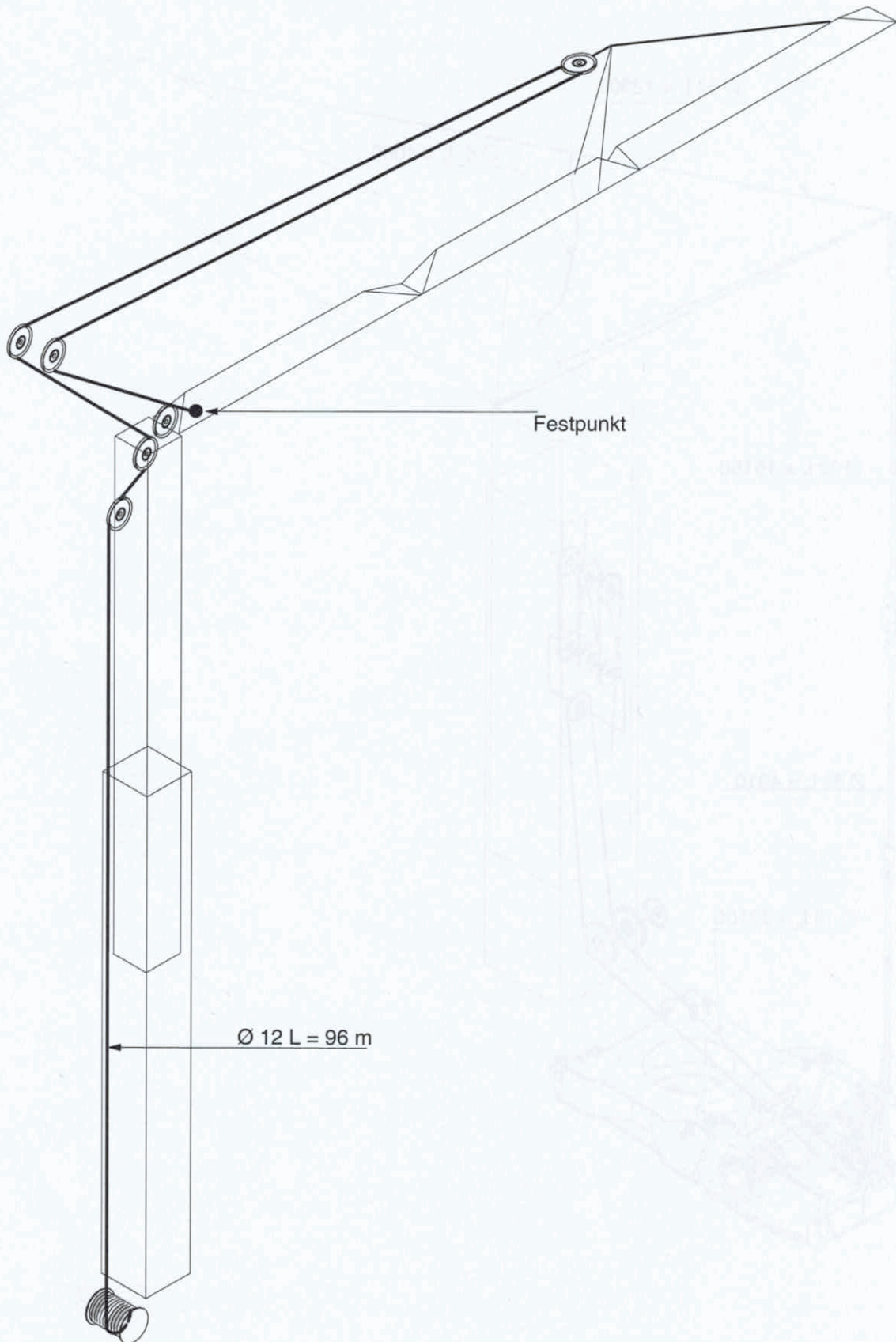
2. PLATZBEDARF FÜR DIE MONTAGE

1. MONTAGESEIL

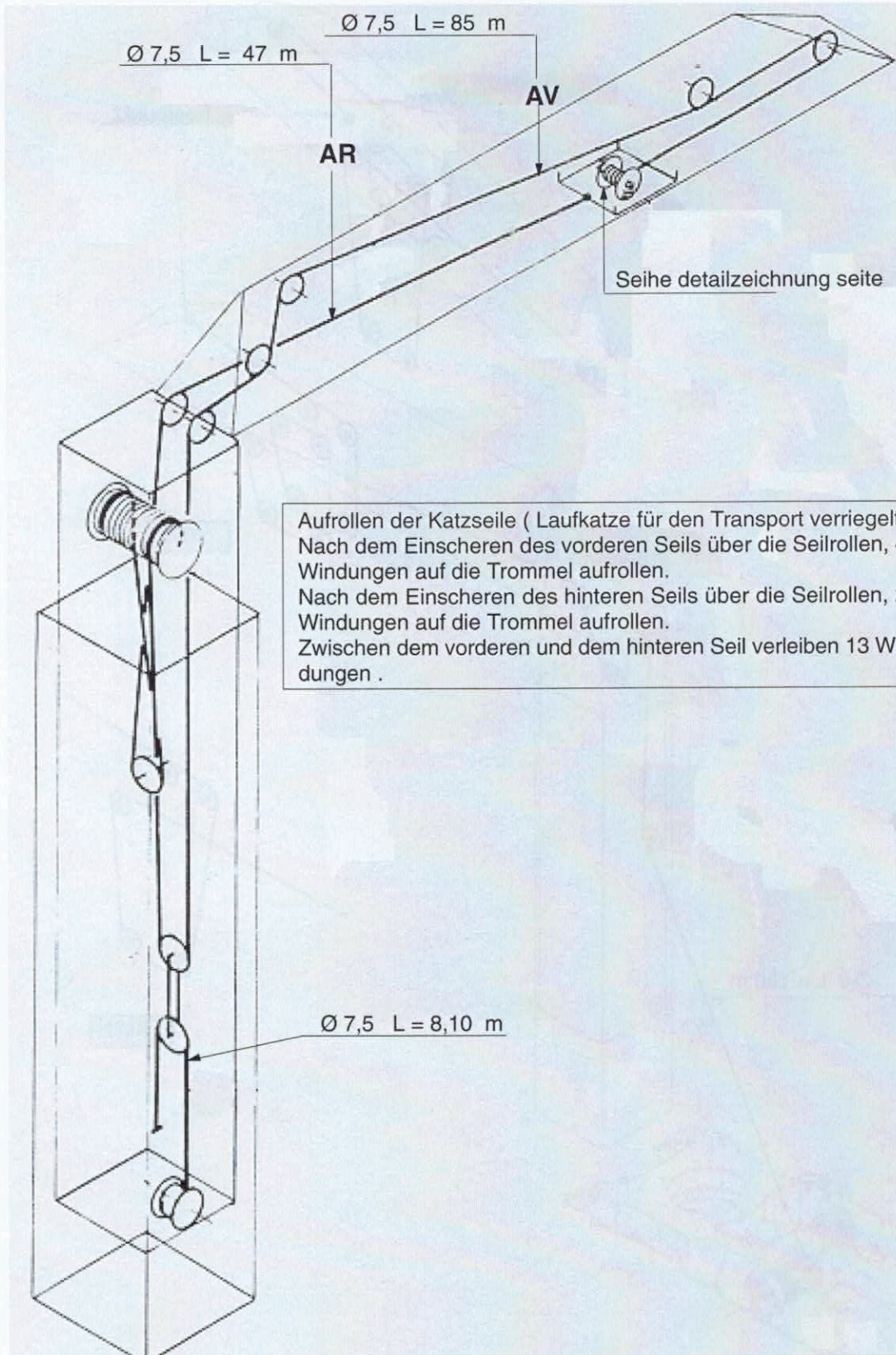
2. HALTESEIL



3. AUSLEGERAUSKLAPPSEIL



4. KATZSEIL



5. HUBSEIL

