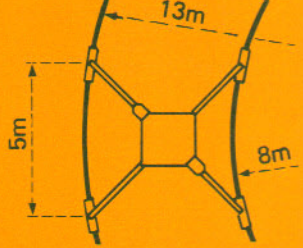
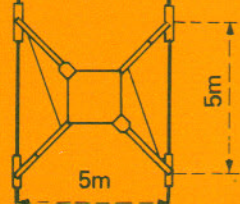
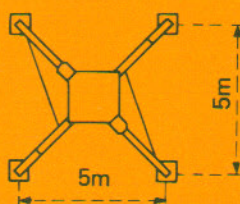
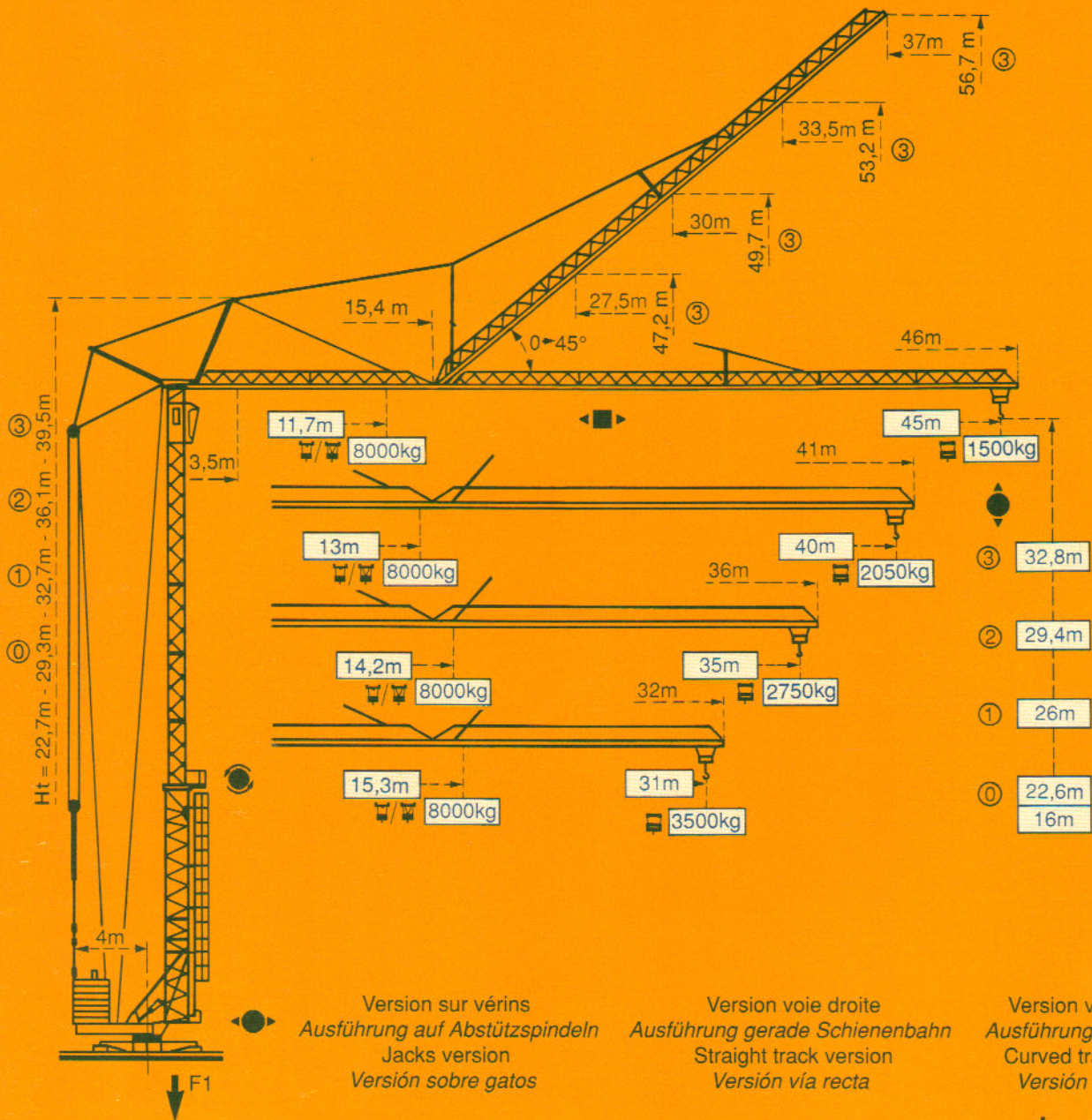



GTMR 366 A

POTAIN 



F1 = Réactions Eckdrücke Reactions Reacciones


F1	● 45t	■ 37t
	30t	


● En service
■ Hors service


● In Betrieb
■ Ausser Betrieb


● In service
■ Out of service

● En servicio
■ Fuera de servicio

 A vide sans lest ni train de transport, avec flèche et hauteur maximum.

 Ohne Last, Ballast und Transportachse, mit Maximalausleger und Maximalhöhe.

 Without load, ballast or transport axles, with maximum jib and maximum height.

 Sin cargas, sin lastre, ni tren de transporte, flecha y altura máximas.

Courbes de charges

Lastkurven

Load diagrams

Curvas de cargas



Flèche Ausleger Jib Flecha



Flèche relevée

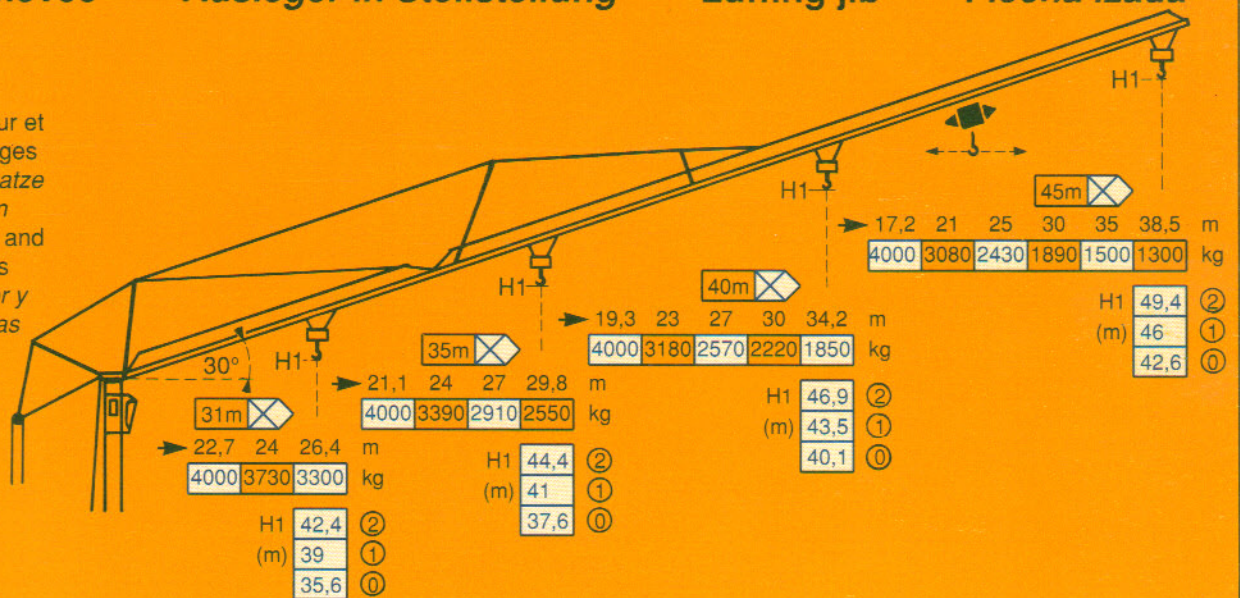
Ausleger in Steilstellung

Luffing jib

Flecha izada



5 D3 V4
 Chariot distributeur et
 Courbes de charges
 Verfahrbare Laufkatze
 und Lastkurven
 Traversing trolley and
 Load diagrams
 Carro distribuidor y
 Curvas de cargas

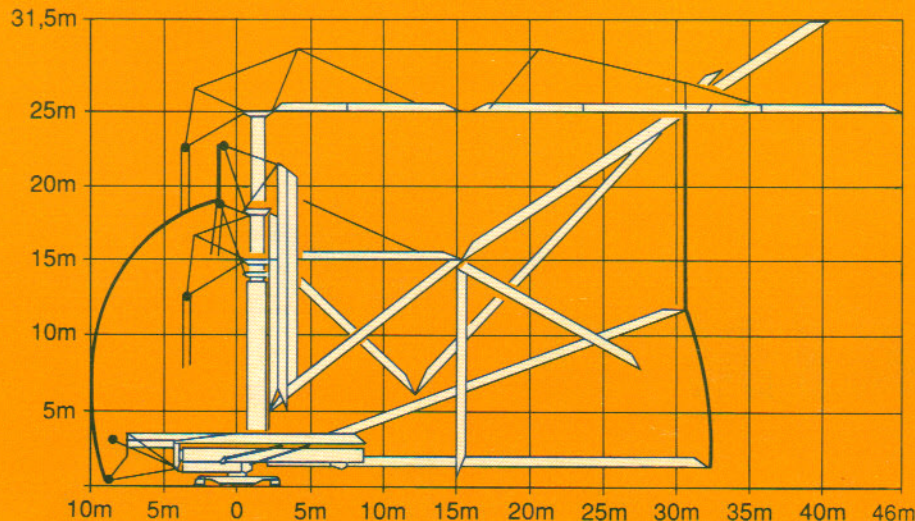


Montage

Montage

Erection

Montaje










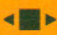







Mécanisme

Antriebe

Mechanisms

Mecanismos

				m/min	kg	ch-PS hp	kW
Levage Heben Hoisting Elevación	33 PC 20 			5,4	4000	5,5	4
				30	4000		
				60	2000		
				2,7	8000	5,5	4
				15	8000		
				30	4000		
Distribution - <i>Katzfahren</i> Trolleying - <i>Distribución</i>		5 D3 V4	15-30-58		5,5	4	
Orientation - <i>Schwenken</i> Slewing - <i>Orientación</i>		RCV 62	0 → 0,8 tr/min U/min-rpm		8	5,9	
Translation - <i>Kranfahren</i> Travelling - <i>Traslación</i>		Standard	25		2 x 4	2 x 3	
Réseau - <i>Netzstrom</i> - Mains supply - <i>Red</i>						380V - 50HZ	
Puissance électrique nécessaire - <i>Anschlusswert</i> - Necessary electric power - <i>Potencia electrica necesaria</i>						50 KVA	
Groupe électrogène - <i>Stromaggregat</i> - Generator set - <i>Grupo electrogeno</i>						*	

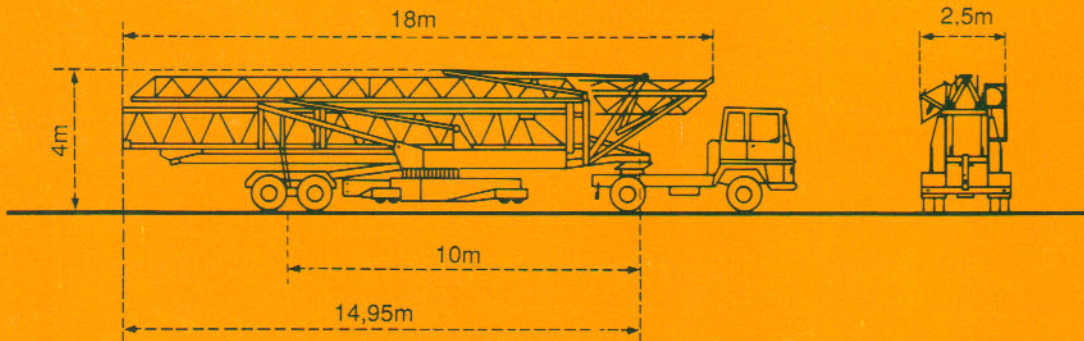
* Nous consulter - *Auf Anfrage* - Consult us - *Consultanos*

Transport

Transport

Transport

Transporte



Version semi-portée
Ausführung als Sattelaufleger
 Tractor towed version
Versión en semi-remolque

Conforme à la directive CEE 84/534 sur le niveau acoustique - *Gemäss EWG-Richtlinie 84/534 über Schall-Leistungspegel*
 In compliance with the EEC 84/534 Instruction on noise level - *Conforme con la directiva CEE 84/534 sobre el nivel acústico*

DIN 15018 H1 B3

NF E52081 - 82

POTAIN 

18, rue de Charbonnières, B.P. 173-F 69132 ECULLY Cedex
 Tél. 72.20.20.20 - Télex 330 179 - Télex. Export 375 213 -
 Fax 72 20 20 00

POTAIN GmbH 6082 MÖRFELDEN WALLDORF
 Nordendstr. 79-87 - Postfach 420
 Tél. 06 105 704.0 - Télex 4.1857 45

GTMR 366A

Réf. 1989.06 KXV 5

Modifications réservées - Änderungen vorbehalten - Subject to modification - Modificaciones reservadas
 Printed in France